

# Gulbenkian

theatre dance music comedy family



Supported using public funding by  
**ARTS COUNCIL  
ENGLAND**



University of  
**Kent**

Summer  
**2017**

---

# Contents

<b>Theatre &amp; Dance</b>	<b>4</b>
<b>Live &amp; Recorded</b>	<b>7</b>
<b>Music</b>	<b>9</b>
<b>Take Part</b>	<b>12</b>
<b>Make a Donation</b>	<b>15</b>
<b>Family</b>	<b>16</b>
<b>Comedy</b>	<b>24</b>
<b>Guestlist</b>	<b>26</b>
<b>Tickets &amp; Information</b>	<b>28</b>
<b>Eat &amp; Drink</b>	<b>28</b>
<b>At a Glance</b>	<b>30</b>

# Hello and a very warm welcome to our Summer 2017 season

which starts with Mark Murphy's V-TOL mix of ground breaking aerial choreography, original text and explosive special effects in OUT OF THIS WORLD. A show that is both intense psychological thriller and heart-rending medical drama.

Featuring some of the finest new generation of British Instrumentalists under the inspiring direction of Principal Conductor Nicholas Collon the wonderful Aurora Orchestra undertake the challenge of performing BRAHMS FROM MEMORY.

Our work for younger audiences (and not so young!) includes a beautiful production from Montreal based Cas Public with SUITES CURIEUSES – inspired by Little Red Riding Hood. Straight from the International Children's Festival in Edinburgh we are very excited to present Australian Company – Barking Gecko's internationally acclaimed BAMBERT'S BOOK OF LOST STORIES. For young people on the autism spectrum and those with profound and multiple learning disabilities the unique and wonderful Oily Cart present MIRROR MIRROR.

There are even more opportunities for young people as artists with two dance summer schools and of course the ever-popular Rock School.

No summer in Kent would be complete without bOing! our International Family Festival on Saturday 26 and Sunday 27 August. The festival is even bigger this year with more international companies than ever before keep an eye on our bOing! website for more information [www.boingfestival.com](http://www.boingfestival.com). This July, also brings UPrising, a one-day festival event run by ART31 involving young people, artists and decision makers in challenging ideas and igniting change in the arts.

## We look forward to welcoming you to Gulbenkian very soon.

**Liz**

Liz Moran, Director, and the Gulbenkian Team

### E-tickets now available

Simply download to an electronic device or print and show to our front of house team on arrival. With no booking fees visit [www.thegulbenkian.co.uk](http://www.thegulbenkian.co.uk) to snap up your tickets!

### Support our work with children and young people

Gulbenkian has a commitment to giving as many children and young people in Kent as possible the opportunity to be creative and inspired.

From spectacular performances at bOing! Family Festival, to our Youth Theatre and work in local schools we have ambitions to do even more with young people Kent particularly those who may be disadvantaged.

Your donation no matter how small will make a real difference. To support our work please contact Tickets & Information on 01227 769075 or visit [www.thegulbenkian.co.uk/donate](http://www.thegulbenkian.co.uk/donate)

Thank you!

Front cover image credit:  
NT Encore: Peter Pan (PG)  
Photo by Sam Robinson.



# the gulbcard

Save on Film Performances Café

Save on  
**FILM**

UP TO

£2

PER TICKET



Save on  
**PERFORMANCES**

UP TO

£2

PER TICKET



Save on  
**CAFÉ**

DISCOUNTS ON

SELECTED  
DRINKS



Go to [www.thegulbenkian.co.uk](http://www.thegulbenkian.co.uk) or visit our  
Ticket and Information desk to find out more.

**Gulbenkian**  
University of Kent



ART31  
KENT

Fri 5 May 7.30pm

ART31 Commission

Mark Murphy's V-TOL present

## Out Of This World

Out Of This World is action-packed theatre from acclaimed writer and director Mark Murphy. It's a powerful love story set within a world of projected film and animation, combining ground breaking aerial choreography, explosive special effects and intense storytelling.

*Ellen has been in a car accident. She's disorientated, in pain, and her husband Anthony is missing. As Ellen descends into a medically induced coma, she knows that she has to escape in order to find Anthony but time is running out. She has a heart-breaking choice to make – her life or her love.*

Mark Murphy is celebrated for his signature genre-defying work, and ambitious, large-scale outdoor events including the Glasgow 2014 Commonwealth Games closing ceremony.

*'Technically sumptuous, the most sophisticated integration of live action and film I've ever seen.'* The Guardian on V-TOL's Without Trace

*'Haunting and beautiful.'* The Scotsman on The Night Shift

T: Full £12.50 / GulbCard £10.50 / Student £8.50 / Gulbenkian Education Network £7.50

SHOWTALK: Followed by post show discussion.

Suitable for ages 14+. Contains strobe lighting, smoke effects and strong language.

Runtime: 80mins

Venue: Colyer-Fergusson Hall



Verve

Tue 9 May 7.30pm

## Northern School of Contemporary Dance

### Verve

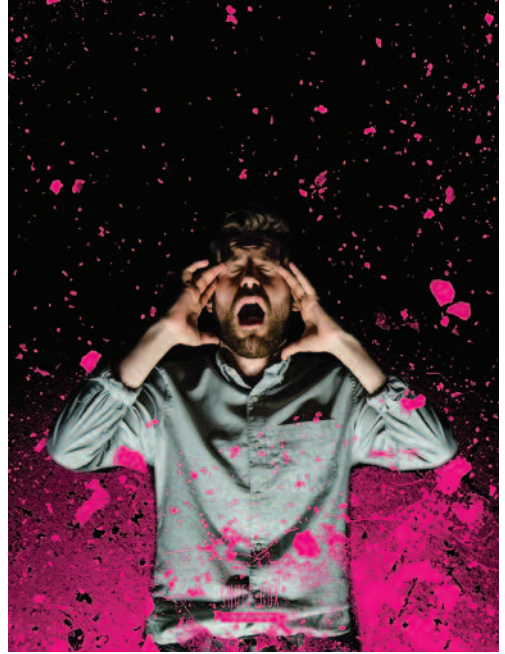
VERVE presents an exhilarating programme of four distinct contemporary dance works choreographed by international artists James Cousins, Carlos Pons Guerra, Leila McMillan and Matthias Sperling.

Performed by a company of eleven dancers trained at some of the world's leading conservatoires, the work is physically daring and thought provoking.

T: Full £12.50 / GulbCard £10.50 / Student £8.50 / Gulbenkian Education Network £7.50

Suitable for ages 13+

Venue: Theatre



Blush

Mon 19 Jun 7.30pm

## Snuff Box Theatre

in association with Sphinx Theatre present

### BLUSH

by Charlotte Josephine

*'She just needs to understand that it's not her fault, that she's not to blame, that she's not a slut.'*

Following a sell-out run at the Edinburgh Festival, Snuff Box Theatre present the award-winning new play by Charlotte Josephine.

Three women and two men swim in shame.

Everyone's exposed.

Everyone wants revenge.

No one's talking about it.

Five candid stories about revenge porn and all its many victims. BLUSH is a slap in the face and a call to arms.

Charlotte Josephine, co-founder of Snuff Box Theatre presents her third play following the success of her award-winning BITCH BOXER (★★★★★ The Guardian and The Times).

T: Full £12.50 / GulbCard £10.50 / Student £8.50 / Schools £7.50

Suitable for ages 16+

Venue: Theatre





Re: Production

**Wed 21 Jun 1pm (Matinee – Babies-In-Arms Welcome) & 7.30pm**

**White Slate Theatre**

**Re: Production**

*“Can you have it all? Do you want it all?”*

A scientist, on the cusp of a new IVF discovery, is faced with difficult decisions about her own fertility. This intimate story explores women's choices, and the science behind those choices, when weighing up careers, parenthood, and where self-worth is found.

The award-winning White Slate Theatre are back on home turf at the Gulbenkian for a third piece of new writing to face the stage. First came the iconic tumultuous story of *Your Fragrant Phantom*, then the compelling & exposing *Captured*, & now don't miss out on the stunningly innovative *Re: Production*.

Supported by Arts Council England's Grants for the Arts

T: Full £12.50 / GulbCard £10.50 / Student £8.50 / Schools £7.50 / Groups 4+ £6.50

Baby on lap (0-18months) £1 (13.00 show only)

Suitable for ages 12+

Runtime: 60minutes

Venue: Theatre



Fagin's Twist

**Sat 14 Oct 7.30pm**

**Avant Garde Dance and The Place present**

**Fagin's Twist**

A tale you think you know unravels and explodes.

*Fagin's Twist* is the untold story of a notorious and complex villain. It imagines Fagin's youth, driven by greed and ambition in the face of overwhelming poverty. The streets are a place of little comfort and fairy-tale endings are hard to find in this poignant coming-of-age tale.

See Dickens' *Oliver Twist* in a new light as Tony Adigun's Avant Garde Dance flips your expectations of five familiar characters, with their unmatched contemporary hip hop style.

*Fagin's Twist* is commissioned by Theatre Bristol, East London Dance, Pavilion Dance South West, Dance East and The Place, and co-produced by The Place. Supported using public funding by the National Lottery through Arts Council England. Tony Adigun is a Work Place artist.

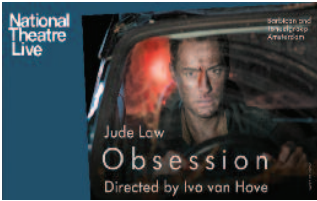
T: Full £12.80 / GulbCard £10.80 / Student £8.80 / Schools £7.80

Suitable for ages 8+

Runtime: 1 hour 45 minutes including interval

Venue: Theatre

Photo: Rachel Cherry



Thu 11 May 7pm

**NT Live: Obsession (15)**

Jude Law (The Young Pope, Closer, The Talented Mr Ripley) stars in the stage production of Obsession, broadcast live from the Barbican Theatre in London. Ivo van Hove (NT Live: A View from the Bridge, Hedda Gabler) directs this new stage adaptation of Luchino Visconti's 1943 film.

T: Full £16 / GulbCard £15 / Student £14

Venue: Cinema



Wed 7 Jun 7.15pm

**ROH: Three Ballets**

The Royal Ballet brings its celebrations of 70 years at the Royal Opera House to a close with a mixed programme of works by its founder choreographer Frederick Ashton.

T: Full £16 / Student £13

Venue: Cinema



Sat 10 & Sun 11 Jun 2pm

**NT Encore: Peter Pan (PG)**

Captured live at the National Theatre, a recorded performance of JM Barrie's much-loved tale screens in cinemas this summer. A delight for children and adults alike, Sally Cookson (NT Live: Jane Eyre) directs this wondrously inventive production, a co-production with Bristol Old Vic theatre.

T: Full £16 / GulbCard £15 / Student £14 / Groups (4+) £10pp

Venue: Cinema



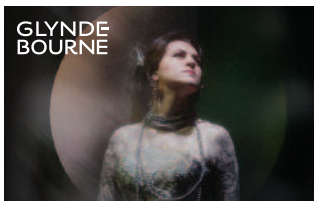
Wed 24 May 7pm

**RSC Live: Anthony and Cleopatra**

Iqbal Khan directs Shakespeare's tragedy of love and duty, picking up the story where Julius Caesar ends.

T: Full £16 / Student £13

Venue: Cinema



Thu 8 Jun 6pm

**Glyndebourne: La traviata (recorded)**

Violetta gives up every hope of happiness in this heart-wrenching love story. Russian soprano Venera Gimadieva portrays the iconic role of Violetta, alongside American tenor Michael Fabiano as Alfredo. The visual beauty of Tom Cairns's opulent production aptly echoes the irresistible allure of this beloved opera.

T: Full £16 / GulbCard £15 / Student £14

Venue: Cinema



Wed 14 Jun 7pm

**Exhibition On Screen: MICHELANGELO: LOVE AND DEATH**

The spectacular sculptures and paintings of Michelangelo seem so familiar to us, but what do we really know about this renaissance genius? Through expert commentary and Michelangelo's own words, this film takes a fresh look at an enigmatic man whose life is celebrated in every mark and every stroke he made.

T: Full £12 / GulbCard £11 / Student £10

Venue: Cinema



**Thu 22 Jun 7pm**

## NT Live: *Salomé* (15)

This charged retelling turns the infamous biblical tale on its head, placing the girl we call Salomé at the centre of a revolution. Internationally acclaimed theatre director Yaël Farber (*Les Blancs*) draws on multiple accounts to create her urgent, hypnotic production which will be broadcast live from the stage of the National Theatre.

T: Full £16 / GulbCard £15 / Student £14

Venue: Cinema



**Wed 5 Jul 7.30pm**

## La Bohème: Live From Taormina

Perched high above the picturesque coast of Sicily and sitting under the shadow of Mt Etna, Teatro Antico di Taormina has inspired artists for over 2000 years – from the ancient Greeks and Romans to Woody Allen and today's opera stars. Performed in original Italian, with English subtitles.

T: Full £16 / GulbCard £15 / Student £14

Venue: Cinema



**Thu 20 Jul 7pm**

## NT Live: *Angels in America Part 1* (15)

### Millennium Approaches

This new staging of Tony Kushner's multi-award winning two-part play is directed by Olivier and Tony award winning director Marianne Elliott (*The Curious Incident of the Dog in the Night-Time* and *War Horse*).

T: Full £16 / GulbCard £15 / Student £14

Venue: Cinema



**Wed 28 Jun 7.15pm**

## ROH: *Otello* (live)

World-famous tenor Jonas Kaufmann makes his role debut as Otello in Verdi's passionate retelling of Shakespeare's great tragedy of jealousy, deception and murder.

T: Full £16 / Student £13

Venue: Cinema



**Thu 6 Jul 6pm**

## Glyndebourne: *Hamlet* (live)

Be part of a major new operatic work – join us for the world premiere of Brett Dean's new opera based on Shakespeare's best-known tragedy. Brett Dean's colourful, energetic, witty and richly lyrical music expertly captures the modernity of this timeless tale, while Matthew Jocelyn's libretto is pure Shakespeare.

T: Full £16 / GulbCard £15 / Student £14

Venue: Cinema

## Now Booking

**Thu 27 Jul 7pm**

## NT Live: *Angels in America Part 2* (15) *Perestroika*

**Thu 3 Aug 6pm**

## Glyndebourne: *La Clemenza di Tito* (live)

**Wed 9 Aug 7pm**

## RSC Live: *Titus Andronicus*

**Thu 31 Aug 7pm**

## NT Live: *Yerma* (15)

**Wed 11 Oct 6pm**

## RSC Live: *Coriolanus*



Fri 26 May 7.30pm

**Aurora Orchestra**

## **Brahms from Memory**

**Johannes Brahms Symphony No. 1 in C minor, Op. 68**

Aurora Orchestra

Nicholas Collon (conductor)

Tom Service (presenter)

*"Marvellous... Playing from memory, Aurora created an organic sense of community, dynamism and inspiration." (David Allen, The New York Times)*

Aurora Orchestra is the only orchestra worldwide currently presenting whole symphonies entirely from memory – a unique performance style which conveys an electrifying sense of adventure, intimacy and heightened communication. For this very special performance featuring an introduction from BBC Radio 3's Tom Service, this thrilling approach is applied for the first time to Brahms' monumental First Symphony.

T: Full £20 / GulbCard £18 / Student £10

Venue: Colyer-Fergusson Hall



In association  
with Gulbenkian,  
Folk In The Barn  
presents...

Working in collaboration  
to bring fantastic folk music  
to Gulbenkian.

For more information about  
Folk in the Barn visit:  
[www.folkinthebarn.com](http://www.folkinthebarn.com)



**Sat 20 May 7.30pm, doors 7pm**

## Kathryn Roberts and Sean Lakeman

Twice recent winners of the BBC Radio 2 Folk Award for Best Duo – 2016 & 2013 – the couple's intimacy and strength of passion on stage have won them many fans and an enviable reputation as 'Songwriters par excellence' (fRoots), whose greatly varied original songs cover such subjects as wicked mermaids, Norwegian legends, and a lonely whale.

T: Full £14 / Student £10

Venue: Theatre



**Sun 10 Sep 7.30pm, doors 7pm**

## Martin Simpson

The remarkable intimate solo performances Martin gives go from strength to strength – every gig is a masterclass. He travels the length and breadth of the UK and beyond, giving rapt audiences passion, sorrow, love, beauty, tragedy and majesty through his playing.

T: Full £15 / Student £7

Venue: Theatre

Photo: Graham Whitmore



**Fri 12 May 7.30pm, doors 7pm**

## Daphne's Flight

21 years since their one and only tour and album, the five talented, award winning musicians who make up Daphne's Flight - Christine Collister, Chris White, Julie Matthews, Helen Watson and Melanie Harrold, are truly excited to be reuniting once again for this inspirational project. Blending folk, blues, jazz and pop, it was the combination of all five voices, a powerhouse of harmonies, that left audiences breathless and brought them much critical acclaim.

T: Full £18 / Student £10

Venue: Theatre



**Fri 23 Jun 7.30pm, doors 7pm**

## Cara

Supported by Emily Watts

One of the most sought after bands within Germany, Cara are touring England to promote their latest album, "Yet We Sing". Born fourteen years ago of Germany's longstanding love affair with Celtic music, Cara's line-up features four of that country's finest traditional musicians, alongside Scottish songwriter and pianist Kim Edgar, delivering an innovative blend of old and new material.

T: Full £15 / Student £10

Venue: Theatre

## Now Booking

Sun 24 Sep

**Phil Beer Band**

Sat 28 Oct

**Breabach**

Sat 18 Nov

**Steeleye Span**

Sun 3 Dec

**Cara Dillon**

Tue 19 Dec

**Albion Christmas Band**



Octandre Concert

**Fri 22 May 1.10pm**

## **Octandre** **Lunchtime Concert**

The University of Kent School of Music & Fine Art are delighted to present the Octandre Ensemble, a flexible collective of London-based musicians co-founded by composer Christian Mason and conductor Jonathan Hargreaves. Taking its name from Varese's seminal work, the ensemble is dedicated to exploring the energy of sounds, and the webs of ideas that form around them. Today's lunchtime concert will feature premier of new works, written by SMFA students, alongside existing repertoire for flute, cello and classical guitar.

T: Free, donations greatly appreciated

Venue: Theatre

In association with Gulbenkian, Beautiful Town Music presents

**Sat 9 Sep 7.30pm**

## **Chris Difford & Arcelia**

Grammy nominated lyricist and double Ivor Novello Award-winning enigma Chris Difford has been successfully turning the mundane into the beautiful for 40 years as one half of Squeeze.

T: £15

Venue: Theatre

## **Canterbury Songwriters' Circle**

A forum in which existing and budding songwriters share new songs and material in a relaxed setting with fellow songwriters.

**Wed 31 May, Wed 28 Jun, Wed 30 Aug**  
**7.30pm**

T: £4 each session (includes hot drink)

Spaces are limited and must be booked in advance by emailing [info@beautifultownmusic.com](mailto:info@beautifultownmusic.com)

# TAKE PART

To find out more or to register for any of these exciting opportunities, please contact Neelam Saredia, Creative Learning Assistant at [n.saredia@kent.ac.uk](mailto:n.saredia@kent.ac.uk) or call 01227 816472.

## Youth Dance Company

Sundays 2.45-5pm

In partnership with Jasmin Vardimon Company and Kent Sport, Gulbenkan Youth Dance Company is an advanced group for 14-18 year olds who are passionate about contemporary dance.



## Gulbenkian Youth Theatre

5-7 & 8-11 year olds  
Saturday mornings

12-14 & 15-18 year olds  
Thursday evenings

Whether you are thinking of acting as a career, want to study drama, just enjoy performing or want to make new friends, these fantastic and fun sessions run during school term-times.



## TECH(Y)31

Mondays 4.30pm – 6pm

Aged 10-12 years and interested in technical theatre or events?

Want to get involved in lighting, sound, costume or stage management? This group will give you the opportunity to get hands on experience in technical theatre. You will get to look at what happens 'behind the scenes' in a theatre, and learn basic stagecraft skills.



## Square Pegs

Saturdays 1pm – 2.30pm

A drama group for young people aged 16-25 with a learning disability, social communication difficulty, or who find it difficult 'fitting in' with mainstream activities. The group builds confidence and self-esteem and gives everyone the chance to shine.

**Plus:** Square Pegs Singers! Monthly Saturdays 10am – 12.30pm. Singing workshop for anyone over the age of 14 years and for all abilities.

For more information email [beth@squarepegsdramaclub.com](mailto:beth@squarepegsdramaclub.com)





## Summer Dance Intensive

Mon 14 – Fri 18 Aug, 10am – 4pm

Aged 12 to 18 and love to dance? If you want to develop your skills and get a chance to perform a new piece on the Gulbenkian stage, join us for a week of dance and fun in the summer holidays.

£100 (bursary places available)



## Canterbury Rock School

Mon 21 – Fri 25 Aug, 10.30am – 5pm

Specifically designed for 11-19 year olds, Canterbury Rock School is a one week concentrated course where young musicians take part in masterclasses, jams, workshops and seminars under the tutelage of top musicians and educators.

Amongst the topics and workshops planned are: 'Running a Band', 'Songwriting Skills', 'Getting the most from your Voice' and 'Let's Jam!'.

£150



## Summer Drama Project

Mon 7 – Fri 11 Aug, 10am – 4pm

Aged 12 to 18 and love theatre? Get the opportunity to be involved in the creation of a brand new play which will be performed on the Gulbenkian stage. Whether you are into acting, directing, technical theatre, stage management or costume you will have an important role to play!

£100 (bursary places available)



## Teacher networking and training sessions

Brings teachers together from across East Kent, offering access to industry professionals and the chance to network with other teachers and Gulbenkian staff over some well deserved tea and cake. Plus one day practical courses exploring a variety of creative approaches to the curriculum. For more information contact: Neelam Saredia, Creative Learning Assistant at [n.saredia@kent.ac.uk](mailto:n.saredia@kent.ac.uk) or call 01227 816472.

*"Your INSETs were perfectly pitched. All staff felt more confident after each session. You have inspired and energised us all!" Deputy Head, Priory Infant School*





## ART31 KENT

ART31 is an exciting movement for young people aged 13-25. Our main aims are to create more events for teenagers and other age groups around Kent, as there can sometimes be a real lack of things to do, as well as to show just how much young people can achieve and have a great time doing it. ART31 is about young people having status as arts practitioners and technicians and about being activists, advocates, and policy shapers. #ChangeKent

The ART31 Canterbury group meets on Thursdays, 5pm – 6.30pm. To join please email [art31canterbury@kent.ac.uk](mailto:art31canterbury@kent.ac.uk).

*'ART31 is the armour I wear into battle.'* Carly, ART31 member



### What's Next?

The ART31 movement is spreading across Kent and we're planning a big event for young people, UPrising, on 15th July 2017. To find out how you can get involved email [hello@art31.co.uk](mailto:hello@art31.co.uk) or go to [www.art31.co.uk](http://www.art31.co.uk). Follow us on facebook and twitter @Art31Kent

## TECH31KENT

Interested in technical theatre or events? Whether you are considering a career backstage, or just want to learn more about what goes on behind the scenes, TECH31KENT is the group for you! Gain hands-on experience and learn a range of stagecraft skills (including sound, lighting and stage management). Follow us @TECH31KENT for updates!

*'Harry absolutely loves it. It's helped him to decide his career path for definite in technical lighting.'* Parent of TECH31 member.

For 13-18 year olds, sessions run weekly, during term time. For enquiries and application forms, e-mail [hello@art31.co.uk](mailto:hello@art31.co.uk).



## SCREEN31

**Aged 16-25? Want to learn more about documentary filmmaking and video editing?**

Apply to join SCREEN31!

For more information, email [hello@art31.co.uk](mailto:hello@art31.co.uk)



Supported using public funding by  
**ARTS COUNCIL  
ENGLAND**



# UPRISING

Young people challenging ideas and igniting change in the arts

**Sat 15 Jul, 10am – 10pm**

Young people challenging ideas and igniting change in the arts.

UPrising is a one-day festival event that ART31 are running at Gulbenkian, Canterbury, which aims to bring together young people, creative professionals and other individuals (eg, politicians and teachers). The day will feature panel discussions and speakers with emphasis on 'conversations' between artists, decision makers and young people on what might need to change to make young people feel/be more empowered and engaged with the arts and how greater engagement of the arts could help address their three areas of concern, education, mental health and well being and employment. Part of this will involve showcasing cultural activity that young people across Kent have been involved in creating and leading.



Visit [www.art31.co.uk](http://www.art31.co.uk) for more information.



Supported using public funding by  
**ARTS COUNCIL ENGLAND**



**Gulbenkian**  
University of Kent

## Make a donation

Empowering children and young people is an important part of what we do at Gulbenkian but we could do even more with your support. All donations help in funding bursary places and opportunities for young people.

To make a donation please contact Tickets & Information on 01227 769075 or visit [www.thegulbenkian.co.uk/donate](http://www.thegulbenkian.co.uk/donate)



Supported using public funding by  
**ARTS COUNCIL ENGLAND**



**Gulbenkian**  
University of Kent



The Tiger Who Came to Tea

**Mon 1 May 1.30pm & 4.30pm,  
Tue 2 – Thu 4 May 10.30am & 1.30pm  
(Tue 2 May 1.30pm – relaxed performance)**

### The Tiger Who Came to Tea

A musical play adapted and directed by David Wood, based on the book by Judith Kerr

Direct from a SMASH-HIT WEST END season!

The doorbell rings just as Sophie and her mummy are sitting down to tea. Who could it possibly be? What they certainly don't expect to see at the door is a big, stripy tiger!

Following a smash-hit West End season, the tea-guzzling tiger is back on the road in this delightful family show; packed with oodles of magic, sing-a-long songs and clumsy chaos! A stunning stage adaptation of the classic tale of teatime mayhem..., expect to be surprised!

★★★★ "This Tiger is the cat's meow" *The Times*  
★★★★ "A rare and grrreat achievement" *Mail on Sunday*

T: £12.50 / Groups of 10+ £10 / Baby on lap £1

Suitable for ages 3+

Run time: 55 mins

Venue: Theatre

Illustrations copyright © Kerr-Kreare Productions Ltd 1968



One Little Word

**Sun 7 May 11.30am & 1.30pm**

### M6 Theatre Company present One Little Word

A beautiful and gentle story of friendship, power struggles and the rich world of creative play.

We meet two characters who play together – exploring a new space, new objects, dressing up and taking turns – but struggles arise when one of them wants to be the ONLY Captain of the ship!

Devised by one of Britain's leading theatre companies for young audiences, ONE LITTLE WORD captivates children's imaginations with a moving story underscored with original music and told with just ONE spoken word.

"The excellent M6" *Lyn Gardner, The Guardian*

Feedback from M6's previous National Tour of ONE LITTLE WORD

★★★★★ *Birmingham Mail*  
"Magical" *The Stage*  
"Outstanding" *Herald Scotland*

T: £8 / Family Group (4+) £6.50 / Baby on lap (0-18months) £1

Suitable for ages 3+

ShowTalk: Followed by meet & greet with the actors

Run time: 35mins with 10mins meet and greet

Venue: Theatre



Chester Tuffnut

Sun 21 May 2pm

### Gomito Theatre & Polka Theatre Co-Production **Chester Tuffnut**

Chester Tuffnut isn't your ordinary treemole – in fact he is one of a kind! Chester likes wearing jumpers and sitting in his armchair, but most of all he loves adventure!

It's been so long since the curious creatures in Woodland have had any excitement, they've forgotten how to have fun. Luckily, Chester is on hand to save his new friends from boredom and bring laughter back to the forest.

Join Chester as he encourages everyone to have at least one adventure a day, in an action packed story full of imaginative antics, told with humour, music and playful puppetry.

This is a story about discovering new places and making friends, a celebration of individuality and togetherness.

You can also have your very own adventure, with the chance to meet the Woodland creatures and explore their dens after the show.

T: £8 / Family Group (4+) £6.50 / Baby on lap (0-18months) £1

Suitable for ages 2-5 years

Run time: 50mins (including Stay & Play)

ShowTalk: Followed by Stay & Play

Venue: Theatre



SPONGE

Sun 4 Jun 12.30pm (4-14months only)  
& 2.30pm (4months-4 years)

### Big Imaginations and Turned On Its Head present **SPONGE**

Roll, squeeze and pop yourself through the squishiest, squashiest show for babies, young children and their grown-ups!

SPONGE is a soft, bouncy adventure through playtime and dreamtime set to a funky 1970s soundtrack, including disco favourites The Hustle and Car Wash. Follow a dad and daughter as they take you on a journey through springy environments, fascinating in shape, texture and touch. You also get to meet the leggy character Splegs, who needs a bit of help walking.

Supported by The Spark Arts

T: £8 / Family Group (4+) £6.50

Run time: 45-50mins

Venue: Theatre





Sun 28 May 11.30am, 1.30pm & 3.30pm

Cas Public (Canada) present

## Suites Curieuses

Inspired by one of the best-loved fairy tales and featuring famous characters from Little Red Riding Hood, Suites Curieuses mischievously plays in the shadows of a magical world where animation comes to life.

This 45-minute playful work is the perfect length for children aged 2yrs+. It features stunning theatrical staging and beautiful interaction between dancers and projections; don't forget to keep an eye out for the toy train!

Cas Public is a Canadian dance company celebrating 25 years of creativity, humour and dance theatre. Suites Curieuses will be sure to capture the imagination of adults and children alike, making it an experience the whole family can enjoy together.

T: £8 / Family Group (4+) £6.50 / Baby on lap (0-18months) £1

Suitable for ages 2+

Runtime: 45mins

Venue: Theatre



Sat 3 Jun 2pm & 4.30pm

**Barking Gecko Theatre  
Company (Australia)**  
present

## Bambert's Book of Lost Stories

Adapted for the Stage by  
Dan Giovannoni & Luke Kerridg  
from Bambert's  
Buch der verschollenen  
Geschichten by Reinhardt Jung

This is the story of Bambert – an impossibly small man with an enormous love for writing. Tucked away in his quiet attic, his only companions are the characters he has created in his stories. And then one day, Bambert decides to set his stories free, to send them out into the world on little balloons, in the hope that they will find a home. The stories contain instructions: whoever finds them is to return them to Bambert with a stamp from wherever they landed, so he knows where they should be set. But as each day passes, and no stories return, Bambert's hope begins to fade.

Will his stories ever find a home?

T: £8 / Family Group (4+) £6.50 /  
Baby on lap (0-18months) £1

Suitable for ages 8+

Runtime: 70mins

Venue: Theatre

**Bg  
TC** **BARKING GECKO**  
THEATRE COMPANY

  
woodside



A Heart At Sea

Sat 10 Jun 2pm

Half a String present

**A Heart At Sea**

Be enthralled by this epic musical folktale told on a miniature scale. Haunting live music tells the story of a Boy who bottles up his heart and throws it into the sea. Original song-writing is set to stunning visuals that centres around a beautifully carved chest holding the secrets to the story. Intricate puppets are swept through this transforming wooden world as the Boy tumbles through an danger and discovery to recover his missing heart. Echoing soundscapes knit together a heart-warming tale of whales, tiny boats, sea captains and beards. Intimate gig-theatre that will resonate with all ages.

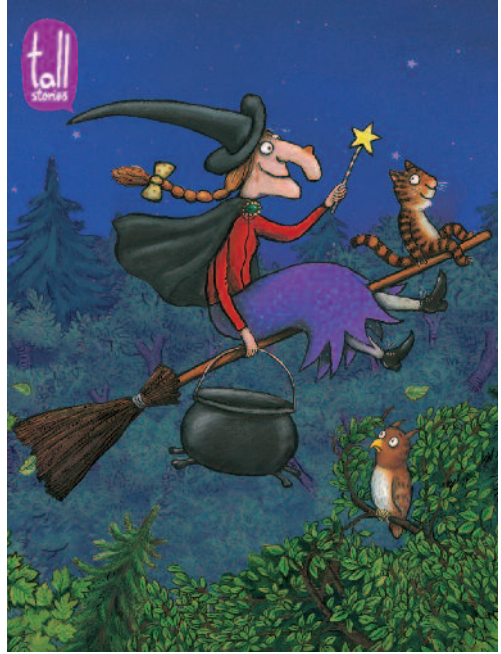
T: £8 / Family Group (4+) £6.50 / Baby on lap (0-18months) £1

Suitable for ages 7+

Runtime: 55mins

Limited capacity: 60

Venue: Theatre



Room on the Broom

Tue 13 Jun 1.30pm & 4.30pm (relaxed performance)

Wed 14 & Fri 16 Jun 10.30am & 1.30pm

Tall Stories present

**Room on the Broom**

**lggety ziggety zaggety zoom!**

Join the Witch and her cat on their mission to defeat the dragon in Tall Stories' magical, musical adaptation of the classic picture book by Julia Donaldson and Axel Scheffler.

The Witch and her cat are travelling on their broomstick when they pick up some hitch-hikers – a friendly dog, a beautiful green bird and a crazy frog. But this broomstick's not meant for five and – CRACK – it snaps in two... just as the hungry dragon appears!

Songs, laughs and scary fun for children aged 3 and up and their grown-ups, in the Olivier Award nominated show that's toured Britain and the world!

*'Perfect introduction to theatre' Sunday Express*

T: £12.50 / Family Group (4+) £11/

Baby on lap (0-18months) £1

Suitable for ages 3+

Runtime: 60mins

Venue: Theatre





Yana &amp; the Yeti

Sun 18 Jun 2pm

**Pickled Image present**  
**Yana & the Yeti**

Imagine being far, far from home and all alone, arriving in a remote snow-bound village, surrounded by dense forest and strange noises. This is how Yana's story begins. She can't understand a word anyone says and the other children tease her with tales of mythical mountain monsters. Then things start to get really hairy....

Featuring exquisite music, Arctic landscapes and a cast of extraordinary puppets, Yana and the Yeti is aimed at family audiences. This is a dark, funny and poignant tale of a small child's determination to be understood and her discovery that friends can come in the most unexpected shapes and sizes.

T: £8 / Family Group (4+) £6.50/ Baby on lap (0-18months) £1

Suitable for ages 5+

Runtime: 60mins

Venue: Theatre



PAT-A-CAKE BABY

Sat 24 Jun 2pm

**Long Nose Puppets present**  
**PAT-A-CAKE BABY**

Are you ready? Grab a spoon! Because it's Pat-a-cake time!

Pitter-patter – get the butter! Glitzy-glossy – whisk in sugar!  
 Jokey-yolky – add the eggs!

Long Nose Puppets offer up a marvellous moonlit show full of riotous rhyme, zany puppets and spiffy special cake; all iced with music and songs by Tom Gray. Little children will feel stuffed to the brim with magic.

PAT-A-CAKE BABY is based on the book written by Joyce Dunbar and illustrated by Polly Dunbar.

Winner of the Mal Peet Children's Award at the East Anglian Book Awards.

*'Cake mixing, baking and eating fuel this zingy, high-energy story as a restless baby sets about a night-time adventure.'*  
*Guardian*

T: £8 / Family Group (4+) £6.50 /  
 Baby on lap (0-18months) £1

Suitable for ages 2-7

Runtime: 45mins plus 'meet the puppets'

Venue: Theatre



Photo: Neal Houghton

Mirror Mirror

**Tue 4 Jul 10.30am (PMLD) and 1.30pm (Autism Friendly), Wed 5 Jul 10.30am (Autism Friendly) and 1.30pm (PMLD)**

## An Oily Cart production Mirror Mirror

Take a seat in Oily Cart's extra-special salon, designed to make you feel beautiful inside and out!

MIRROR MIRROR's multi-sensory beauty parlour is a chance to be pampered and get involved in messy play. Soft make-up brushes glide across faces, warm soapy water washes over skin, and mud-packs are massaged into hands in Oily Cart's production for children and young people with complex disabilities. It's a world of sparkling light and magical mirrors, complemented by the aroma of perfume and accompanied by live music from a full-sized harp. MIRROR MIRROR is an immersive, interactive treat from head to toe.

T: £10 (including carer) / Observer £8

Suitable for ages 3-19 and comes in two distinct versions: for children and young people with profound and multiple learning disabilities, and for children and young people on the autism spectrum.

Run time: 50mins

Limited capacity: 6 children / young people, 6 adult carers and 6 observers per show.

Venue: Theatre



Photo: Manu Palomeque

bOing! International Family Festival

**Sat 26 & Sun 27 Aug, 10am – 5pm**

## bOing! International Family Festival

A summer weekend of the very best theatre, dance, music, films and fun for all the family, packed with magical performances and experiences on the beautiful University of Kent campus in Canterbury.

The programme for the festival will be announced in April 2017 – be the first to know by signing up to the e-newsletter!

Find out more: [www.boingfestival.com](http://www.boingfestival.com) or call 01227 769075



Supported using public funding by  
**ARTS COUNCIL ENGLAND**



School of Arts



## Volunteer!

We want everyone to have the chance to be part of bOing! and volunteering is a brilliant way to get involved! Want to find out more? Contact Rebecca on [r.m.brown@kent.ac.uk](mailto:r.m.brown@kent.ac.uk)



Mon 11 Sep 4.30pm, Tue 12 Sep 10.30am &  
1.30pm (relaxed performance) & Wed 13 & Thu 14 Sep 10.30am & 1.30pm

Scamp Theatre and Freckle Productions present  
**STICK MAN**

Touching, funny and utterly original, Scamp Theatre's delightful adaptation of Julia Donaldson and Axel Scheffler's *STICK MAN* features a trio of top actors and is packed full of puppetry, songs, live music and funky moves.

T: £12.50 / Family groups (4+) £10 / Baby on lap (0-18months) £1

Suitable for ages 3+

Venue: Theatre

Now  
booking!



Wed 6 – Sun 10 Dec, times vary

Arthur Pita's

**The Little Match Girl**

A dance theatre adaptation inspired by the tale by Hans Christian Andersen

Following a sell-out season at Sadler's Wells last year, celebrated director & choreographer Arthur Pita returns on tour with his magical dance theatre show, *The Little Match Girl*.

Based on Hans Christian Andersen's classic story, this touching tale of an impoverished young street girl's hopes and dreams is beautifully told through dance, song and original music performed live on stage.

★★★★★ "MAGICAL. Wonderfully inventive. A gem" The Observer  
Commissioned by DanceEast

T: tickets from £8.50

Suitable for ages 5+

Venue: Theatre





Sun 7 May 7.30pm

## The Noise Next Door: Uproar!

Witness the astonishing comedy sensation LIVE! The Noise Next Door are causing a commotion with their fourth nationwide tour – an anarchic evening of side-splitting jokes, jaw-dropping characters, and mind-blowing songs. Join the quickest wits in comedy as they transform audience suggestions into a fantastic, fresh new entertainment experience every single night.

T: £15

Suitable for ages 15+

Venue: Theatre



Fri 19 May 8pm

## Ehsan Mohammadzadeh Devil In Da House

Starting a comedy career in Iran is not easy. There is no tradition of stand-up, and nor is there the total freedom of speech on which the form relies. Ehsan's solution was to perform secret shows. After putting together five full-length underground shows in Iran, he presents his first English-language stand-up show.

SHOWTALK: Introduced & followed by Q&A with Dr Oliver Double.

T: Full £10 / Student £6 / Groups (4+) £5

Venue: Theatre



Sat 24 Jun 8pm

## Rob Rouse Are you sitting comfortably

He's married, has two kids, a dog and an eye-watering mortgage, (is in debt) in these times of austerity and uncertainty, but remains resolute that a career in unpredictable world of comedy was absolutely the right way to go. (It's far too late to try something else now.)

T: Full £14 / Student £12

Suitable for ages 16+

Venue: Theatre



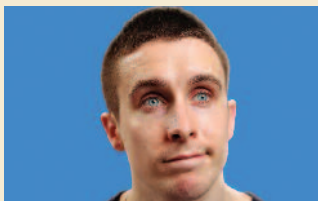
Tue 16 May 7.30pm

## Linda Smith Lecture: Susan Calman

Susan is known to Radio 4 listeners as a regular panellist on The News Quiz, and for her two series, Susan Calman is Convicted and Keep Calman Carry On. On television she has appeared on QI and in the sitcoms Fresh Meat and Dead Boss. She is also known for her superb stand-up act, and her first DVD Lady Like is available from Go Faster Stripe.

T: £6

Venue: Theatre



Wed 13 Jun 8pm

## Larry Dean Fascissist

Off the back of a break-up and facing the introspection that such a change brings, Larry is beginning to think about what it means to be him. People keep telling him he's changed, but he's not quite sure whether that's a good or bad thing. Who was he before?

T: Full £10 / Student £8

Suitable for ages 14+

Venue: Theatre



Sun 17 Sep 7.30pm

## Paul Zerdin All Mouth

America's Got Talent winner 2015 Ventriloquist Paul Zerdin returns home to the UK fresh from headlining the world-famous Planet Hollywood, Las Vegas with a sparkling new show featuring his all-star cast of (in)famous puppets.

T: £17.50

Suitable for ages 15+

Venue: Theatre



Wed 4 Oct 8pm

**Tom Stade**

### I Swear

After a hiatus from the touring scene, get ready for another epic blast of Tom Stade! Direct from the Edinburgh Festival, the Canadian tour-de-force is back with a brand-new show for 2017.

T: Full £17.50 / Student £16

Suitable for ages 16+

Venue: Theatre



Tue 28 & Wed 29 Nov 7.30pm

**Ed Byrne**

### Spoiler Alert

Brand new stand up show from the unrivalled master of observational comedy! As seen on Mock The Week (BBC) and Dara & Ed's Big Adventure (BBC).

T: £24

Suitable for ages 16+

Venue: Theatre

## Curry night

Get those taste buds going with a delicious curry in our café before selected comedy shows.

Special offer – curry and a drink for £9.50

Call 01227 769075 to reserve your table.



Sun 19 Nov 7.30pm

**Jason Byrne**

### The Man with Three Brains

Jason has three brains which kick into action when he hits the stage. His left brain scans the audience and room, looking for improv moments. His right brain collates stand-up material and stunts, poised to dish out the funnies at speed. His centre brain is Jason's coach, pushing him to the limit.

T: £19.50

Suitable for ages 14+

Venue: Theatre

Thu 14 Dec 7pm

Interactive Theatre International presents

## Faulty Towers The Dining Experience

Only one third of this two-hour show is scripted, so anything can happen as audiences take their seats in the 'Fawly Towers' restaurant. Waited upon by Basil, Sybil and Manuel, this is fully immersive, highly improvised and site-specific comedy theatre at its best. Expect all the best gags, shambolic service and a '70s style 3-course meal in 'top end entertainment that will knock you for six' (*What's on London*). Just don't mention the war! Internationally acclaimed by audiences and critics alike.

T: 14 Dec – £45 including 3 course Christmas meal

Venue: Café



**Introducing our guests this season who have chosen Gulbenkian as the venue to host their event or performance.**

Gulbenkian spaces are available for private hire. Please contact Rebecca Brown on 01227 827964 or email [r.m.brown@kent.ac.uk](mailto:r.m.brown@kent.ac.uk)



**Thu 8 Jun 6.30pm & Fri 9 Jun 7.30pm**

**T24 present  
James and the Giant Peach**

**By Roald Dahl, adapted for the stage by David Wood**

Join the T24 Drama Society on a rolling journey in this fresh, fun and visually vibrant family production of Roald Dahl's classic tale.

*This amateur production of 'James and the Giant Peach' (Wood) is presented by special arrangement with SAMUEL FRENCH, LTD.*

T: Full £10 / Concessions £7 / Student £5 / Under 12s £3

Venue: Theatre



**Mon 12 Jun 7.30pm**

**Smokescreen Productions present  
Shell Shock – The Play**

A stunning personal realisation of one soldier's experience of learning to cope with Post Traumatic Stress Disorder.

T: Full £12 / Concessions £10 / 50% off full price for serving military and veterans

Suitable for ages 14+

Venue: Theatre



**Sat 13 May 10am – 4pm**

**TEDxUniversityofKent  
The Unexplored**

From the undiscovered to the outright unexpected TEDxUniversityofKent will be putting on a full-day event to showcase a whole host of bright ideas, talks and activities, coinciding with the core values of TED: innovation, illumination, and inspiration.

T: £15

Venue: Theatre



**Sun 11 Jun 7.30pm**

**MTS present  
The Ludicrous State  
Of Student Kind:  
The Musical**

Following a fantastic year of shows, MTS return to the Gulbenkian stage with a Showcase that exposes the truth about student life and the chaos and drama that it brings. Featuring songs from Hamilton, In The Heights, Avenue Q, School of Rock and many more.

T: Full £8 / Concessions & Students £5

Venue: Theatre



**Sun 2 Jul 2pm**

**Chartham Theatre School  
CTS Summer Showtime**

After appearing at the Gulbenkian Theatre 2 yrs running with their annual fundraiser for the Pilgrims Hospices 'A Christmas Collection', Chartham Theatre School are delighted to perform their summer showcase here for the first time. An entertaining afternoon of song, dance, and acrobatics with performers age 2yrs-18yrs +.

T: £8.50 / Children & Seniors £4.50

Venue: Theatre



Tue 11 Jul 2pm & 7pm & Wed 12 Jul 7pm

**The Canterbury Academy  
School of Rock**

Join the talented singers, actors, and musicians of The Canterbury Academy as they perform Andrew Lloyd Webber's new musical SCHOOL OF ROCK, one of the first UK school performances of this exciting hit show. A School production by arrangement with The Really Useful Group Ltd.

T: Full £11 / Under 18 £6  
Venue: Theatre



Thu 20 Jul 6.30pm  
**Bakehouse Dance Studios  
Road Trip U.S.A.**

Join us for an evening of fun, family entertainment as we dance around America, exploring its iconic towns, cities and land marks. Enjoy the elegance of ballet, dynamism of tap and the energy of modern dance, all with an American twist. Also included, "A Dancer's Journey".

T: Full £12 / Age 12-16yrs\* £10 / over 65's £10 / under 12yrs\* £6 – \*when accompanied by a full price adult  
Venue: Theatre



Sat 12 Aug 6pm  
**Swagga Dance Academy  
The A-Z of Dance**

An amateur dance performance by students aged from 3 years to adults working their way through each letter of the alphabet.

Incorporating current sounds, some golden oldies, fresh up to date choreography and classic dance styles this makes for a great family show for all ages.  
T: Full £12 / Concessions £8.50  
Venue: Theatre



Thu 13 Jul 6pm  
**The Canterbury Primary School  
Snow White**

Year 6 welcome you to their version of Snow White, the classic fairy tale, as you've never seen it before. Old favourites remain – however, you'll see some more interesting sides to these well-known characters, including: a shopaholic Queen, the stressed out teacher Snow White and the new personalities of the seven dwarfs.

T: Full £10 / Children £3  
Venue: Theatre

Tue 1 – Sat 5 Aug 7.30pm  
(Wed matinee only 2.45pm)

**The Old Stagers  
present for their  
166th season  
The Real Inspector  
Hound**

by Tom Stoppard  
**Ways And Means**  
by Noël Coward

These two short comedies by two of England's greatest playwrights make for a delightful evening of laughter, wit and sarcasm. The first is an ingenious parody of a typical English 'whodunnit' combining suspense with laughter and satire. 'Ways & Means' is Coward at his best, with two impoverished socialites marooned in a bedroom in the Côte d'Azur.



A topical musical revue (known as the Epilogue) follows the plays on Friday and Saturday nights.

T: Tue 2 for 1 £15  
Wed (at 2.45pm) & Thu £13;  
Student £11  
Fri (Gala night, black tie optional)  
£20, Sat £17

This amateur production of The Real Inspector Hound & Ways and Means is presented by special arrangement with Samuel French, Ltd.  
Venue: Theatre

# Tickets & Information

Gulbenkian, University of Kent, Canterbury, CT2 7NB

Tel: 01227 769075

Free online booking [www.thegulbenkian.co.uk](http://www.thegulbenkian.co.uk)

## Opening hours

Monday to Saturday 10am – 7pm

Sunday 12pm – 7pm

Opening hours can vary dependent on programme.

## Special Offers and Discounts

### Groups

Call our Tickets & Information team for more information.

### Concessions

Where advertised apply to children under 16, full and part time students, registered unemployed, senior citizens, disabled person and a companion. Proof of status may be required.

### Schools

The Gulbenkian has a schools network which supports group visits and teacher training. Please contact Neelam Saredia, Creative Learning Assistant, [n.saredia@kent.ac.uk](mailto:n.saredia@kent.ac.uk) for more information.

## Family shows

Gulbenkian welcomes children with a valid ticket and accompanied by an adult at all times. Age ranges are provided as a guide and we ask you to consider whether the show is suitable for your child.

**Baby-on-lap tickets** – £1 tickets for age 0-18 months are available on selected family shows.

## Disabled access

To ensure the best use of our facilities please notify the Ticket & Information Office of your requirements when booking.

**4 wheelchair spaces available** – advance booking essential.

**Dedicated parking spaces.**

**Level access** through automatic doors to the theatre, foyer and bar.

**Disabled accessible toilet.**

**Assistance dogs welcome.**

**Infrared audio system** for hard of hearing people.

Headsets available from the Ticket & Information office.

**Kent produce.  
Freshly made.  
Every day.**

**Gulbenkian  
Café**



Reserve a table for pre-theatre or film dining. Call 01227 769075.



## How to find us

### Parking

**Free parking is available to Gulbenkian customers after 5pm on weekdays and all day at weekends in any University car park.**

For Gulbenkian customers attending events between Monday and Friday 8am to 5pm please park in the Visitor Pay and Display car parks on Campus. £2 for 3 hours and £6 all day (8am – 5pm). The nearest Visitor Pay and Display is the Central Visitor Car Park.

**When attending events we strongly recommend customers to allow extra time to find your space and park in designated parking spaces only. Please be advised that yellow lines on campus are enforced and we advise customers to park in designated car parking spaces**

### Coach/Mini bus parking

Safe, convenient drop off points are available close to the Gulbenkian.

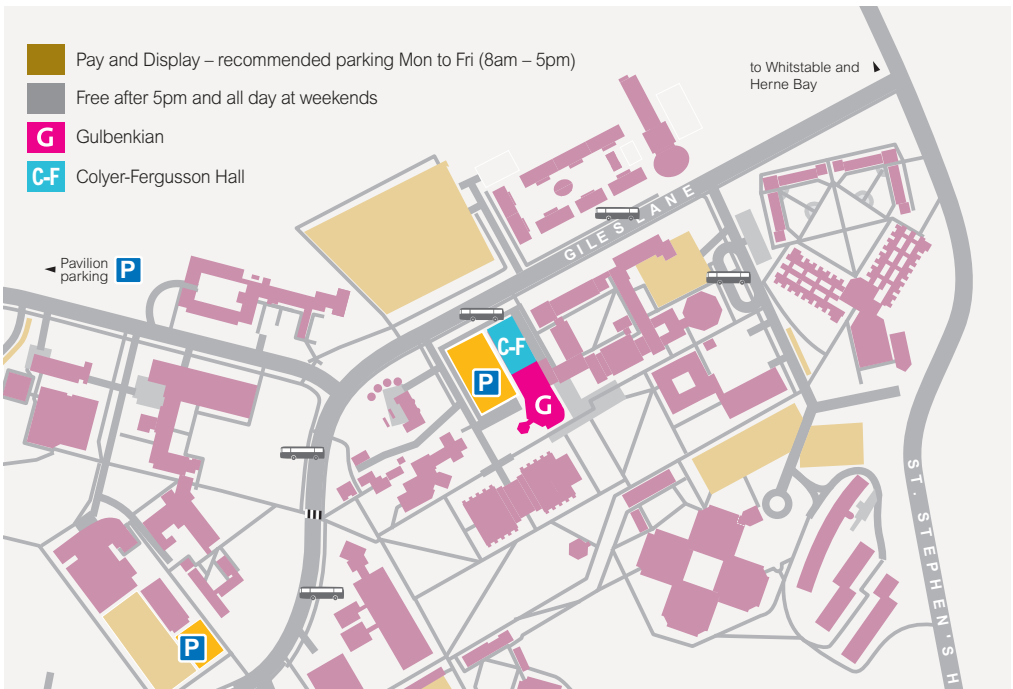
Please contact the Tickets & Information on 01227 769075 and let us know in advance how many vehicles/coaches and what size they are so that we can make the necessary arrangements.

### Bus Service

A regular bus service operates from Canterbury City centre to the University. Please see [www.stagecoachbus.com](http://www.stagecoachbus.com)

**If you would like a text copy of this brochure in large type please phone 01227 769075 or email [boxoffice@kent.ac.uk](mailto:boxoffice@kent.ac.uk)**

All information and dates correct at time of printing, but due to the nature of our programme we strongly recommend checking the website for amendments or phoning 01227 769075 for the latest information before attending.



## May

M-Th	1-4	times vary	<i>The Tiger Who Came to Tea</i> (T) p16
F	5	7.30pm	Mark Murphy's VTOL <i>Out of This World*</i> (CF) p4
Su	7	11.30am & 1.30pm	M6 Theatre Company <i>One Little Word</i> (T) p16
Su	7	7.30pm	<i>The Noise Next Door: Uproar!</i> (T) p24
T	9	7.30pm	Northern School of Contemporary Dance <i>Verve</i> (T) p5
Th	11	7pm	NT Live: <i>Obsession</i> (15) (C) p7
F	12	7.30pm, doors 7pm	Folk in the Barn present <i>Daphne's Flight</i> (T) p10
S	13	10am-4pm	TEDxUniversityofKent <i>The Unexplored</i> (T) p26
T	16	7.30pm	Linda Smith Lecture: <i>Susan Calman</i> (T) p24
F	19	8pm	Ehsan Mohammadzadeh <i>Devil In Da House</i> (T) p24
S	20	7.30pm, doors 7pm	Folk in the Barn present <i>Kathryn Roberts and Sean Lakeman</i> (T) p10
Su	21	2pm	Gomito Theatre & Polka Theatre Co-Production <i>Chester Tuffnut</i> (T) p17
F	22	1.10pm	University of Kent, Medway <i>Octandre Concert</i> (T) p11
W	24	7pm	RSC Live: <i>Anthony and Cleopatra</i> (C) p7
F	26	7.30pm	Aurora Orchestra <i>Brahms from Memory</i> (CF) p9
Su	28	11.30am, 1.30pm & 3.30pm	Cas Public Suites <i>Curieuses</i> (T) p18
W	31	7.30pm	Beautiful Town Music present <i>Canterbury Songwriters' Circle</i> (O) p11

## June

S	3	2pm & 4.30pm	Barking Gecko Theatre Company <i>Bambert's Book of Lost Stories</i> (T) p19
Su	4	times vary	Big Imaginations and Turned On Its Head present <i>SPONGE</i> (T) p17
W	7	7.15pm	ROH: <i>Three Ballets</i> (C) p7
Th	8	6pm	Glyndebourne: <i>La traviata</i> (recorded) (C) p7
Th-F	8&9	times vary	T24 <i>James and the Giant Peach</i> (T) p26
S	10	2pm	Half a String <i>A Heart At Sea</i> (T) p20
S-Su	10&11	2pm	NT Encore: <i>Peter Pan</i> (PG) (C) p7
Su	11	7.30pm	MTS The Ludicrous State Of Student Kind: <i>The Musical</i> (T) p26
M	12	7.30pm	Smokescreen Productions <i>Shell Shock – The Play</i> (T) p26
T-W & F	13, 14 & 16	times vary	Tall Stories present <i>Room on the Broom</i> (T) p20
W	13	8pm	Larry Dean <i>Fasrcissist</i> (Ca) p24
W	14	7pm	Exhibition On Screen: <i>Michelangelo: Love And Death</i> (C) p7
Su	18	2pm	Pickled Image <i>Yana &amp; the Yeti</i> (T) p21
M	19	7.30pm	Snuff Box Theatre <i>BLUSH</i> by Charlotte Josephine (T) p5
W	21	1pm & 7.30pm	White Slate Theatre <i>Re: Production</i> (T) p6
Th	22	7pm	NT Live: <i>Salomé</i> (15) (C) p8
F	23	7.30pm, doors 7pm	Folk in the Barn present <i>Cara</i> (T) p10
S	24	2pm	Long Nose Puppets <i>PAT-A-CAKE BABY</i> (T) p21
S	24	8pm	Rob Rouse <i>Are you sitting comfortably</i> (T) p24
W	28	7.15pm	ROH: <i>Otello</i> (live) (C) p8
W	28	7.30pm	Beautiful Town Music present <i>Canterbury Songwriters' Circle</i> (O) p11



## July

Su	2	2pm	Chartham Theatre School CTS <i>Summer Showtime</i> (T) p26
T-W	4&5	times vary	An Oily Cart production <i>Mirror Mirror</i> (T) p22
W	5	7.30pm	La bohème: Live from Taormina (C) p8
Th	6	6pm	Glyndebourne: <i>Hamlet</i> (live) (C) p8
T-W	11&12	times vary	The Canterbury Academy <i>School of Rock</i> (T) p27
Th	13	6pm	The Canterbury Primary <i>School Snow White</i> (T) p27
Th	20	6.30pm	Kent Youth Dance <i>Road Trip</i> U.S.A. (T) p27
Th	20	7pm	NT Live: <i>Angels in America</i> Part 1 (15) (C) p8
Th	27	7pm	NT Live: <i>Angels in America</i> Part 2 (15) (C) p8

## August

T-S	1-5	7.30pm (W: mat' 2.45pm)	The Old Stagers present for their 166 <sup>th</sup> season <i>The Real Inspector Hound &amp; Ways And Means</i> (T) p27
Th	3	6pm	Glyndebourne: La Clemenza di Tito (live) (C) p8
W	9	7pm	RSC Live: Titus Andronicus (C) p8
S	12	6pm	Swagga Dance Academy <i>The A-Z of Dance</i> (T) p27
M-F	7-11	10am-4pm	Summer Drama Project (O) p13
M-F	14-18	10am-4pm	Summer Dance Intensive (O) p13
M-F	21-25	10.30am -5pm	Canterbury Rock School (O) p13
S-Su	26&27	10am-5pm	bOing! International Family Festival (O) p22
W	30	7.30pm	Beautiful Town Music present Canterbury Songwriters' <i>Circle</i> (O) p11
Th	31	7pm	NT Live: <i>Yerma</i> (15) (C) p8

## September

S	9	7.30pm	Beautiful Town Music present Chris Difford & Arcelia (T) p11
Su	10	7.30pm, doors 7pm	Folk in the Barn present Martin Simpson (T) p10
M-Th	11-14	times vary	Scamp Theatre and Freckle Productions present <i>STICK MAN</i> (T) p23
Su	17	7.30pm	Paul Zerdin <i>All Mouth</i> (T) p24

## October

W	4	8pm	Tom Stade / <i>Swear</i> (T) p25
W	11	6pm	RSC Live: Coriolanus (C) p8
S	14	7.30pm	Avant Garde Dance and The Place present <i>Fagin's Twist</i> (T) p6

## November

Su	19	7.30pm	Jason Byrne <i>The Man with Three Brains</i> (T) p25
T-W	28&29	7.30pm	Ed Byrne <i>Spoiler Alert</i> (T) p25

## December

Th	14	7pm	Interactive Theatre International presents <i>Faulty Towers The Dining Experience</i> (Ca) p25
W-Su	6-10	times vary	Arthur Pita's <i>The Little Match Girl</i> (T) p23

### Genre Key:

**Theatre & Dance**  
Comedy  
Music  
Family  
Live & Recorded  
Screenings  
Guestlist  
Take part

### Venue Key:

(T) = Theatre  
(C) = Cinema  
(Ca) = Café  
(O) = Other  
(CF) = Colyer-Fergusson  
Music Hall

\* = This show is followed  
by a Q&A or activity

# boing!

International Family Festival

Sat 26 & Sun 27 Aug 2017 [www.boingfestival.com](http://www.boingfestival.com)

Booking  
opens  
May 2017



**Gulbenkian**  
University of Kent

Tickets & Information  
01227 769075  
[www.thegulbenkian.co.uk](http://www.thegulbenkian.co.uk)